

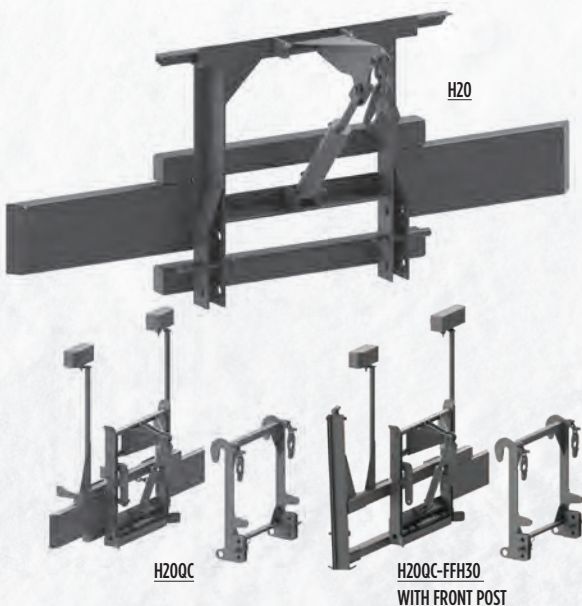


*Manufacture, distribution and installation
of snow removal and anti-icing equipment*



*The brand of quality
— **SINCE 1976** —*

DESIGNED TO HANDLE THE TOUGHEST JOBS



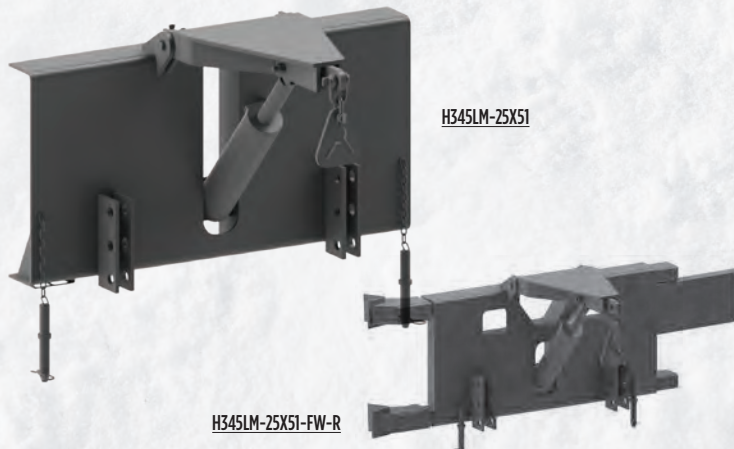
H20 HITCH

LOW-PROFILE HITCH FOR LIGHT TRUCKS ONLY*

- Tubular steel construction to endure severe snow removal conditions
- Mounts close to chassis to reduce stress on front axle
- Stress created from snowplowing operations is transmitted back along the chassis frame rails to reduce pressure on hitch and from axle

*Ensure the capacity of axles

MODEL NUMBER	WEIGHT	CABLE FRONT POST	HYDRAULIC FRONT POST
<i>H20 - Basic</i>	300 lbs	-	-
<i>H20-FFH30 - With front post</i>	500 lbs	-	✓
<i>H20QC - Quick detach</i>	600 lbs	-	-
<i>H20QC-FFH30 - With front post</i>	700 lbs	-	✓



H345LM HITCH

LOW-PROFILE HITCH DESIGNED FOR ALL CHASSIS EXCEPT 4 × 4s

- Low-mount hitch enables truck hood to be tilted forward at all times without having to detach hitch or plow
- For safety, cylinder and lift arm can be tucked within the hitch when plow is detached
- Utilizes a 4" diameter × 10 1/2" stroke double acting lift cylinder with a nitrided piston rod

MODEL NUMBER	WEIGHT	CABLE FRONT POST	HYDRAULIC FRONT POST
<i>H345LM-25×51 - Basic</i>	450 lbs	-	-
<i>H345LM-25×51-FW-R - With right wing attachment</i>	600 lbs	-	✓

H345 HITCH

DESIGNED FOR ALL CHASSIS

- Rugged elevated hitch with built-in steel bumpers
- Recommended whenever a chassis is to be equipped with a combination front plow and side wing system
- Complete hitch (and side wing post if applicable) can be easily tilted forward by removing two (2) pins, allowing the truck hood to open
- Front wing post is supported by two (2) 5" × 3" × 3/8" rectangular steel tubes and 4" × 3" × 3/8" angle iron

MODEL NUMBER	WEIGHT	CABLE FRONT POST	HYDRAULIC FRONT POST
<i>H345 - Basic</i>	525 lbs	-	-
<i>H345-FW-R - Right wing attachment</i>	575 lbs	✓	✓
<i>H345-FW-FW - Right and left wing attachment</i>	635 lbs	✓	✓

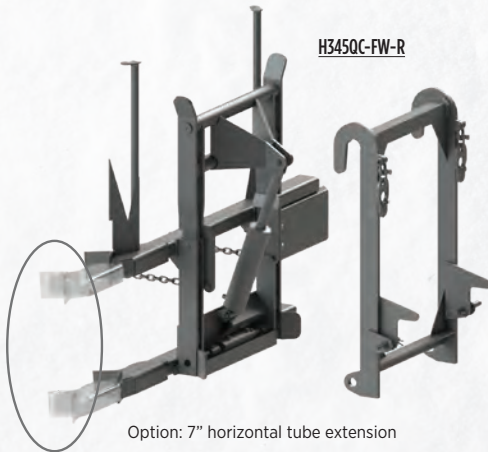


Option: 7" horizontal tube extension

H345QC HITCH

DESIGNED FOR ALL CHASSIS

- Quick coupler system offers several advantages over conventional type hitches
- Connect/disconnect snow plow by activating lift cylinder - operator does not have to leave cab
- Secure plow hitch with lower hydraulic locking pin
- Hinged upper section of QC hitch can be hydraulically lowered from the cab to enable truck hood to tilt forward

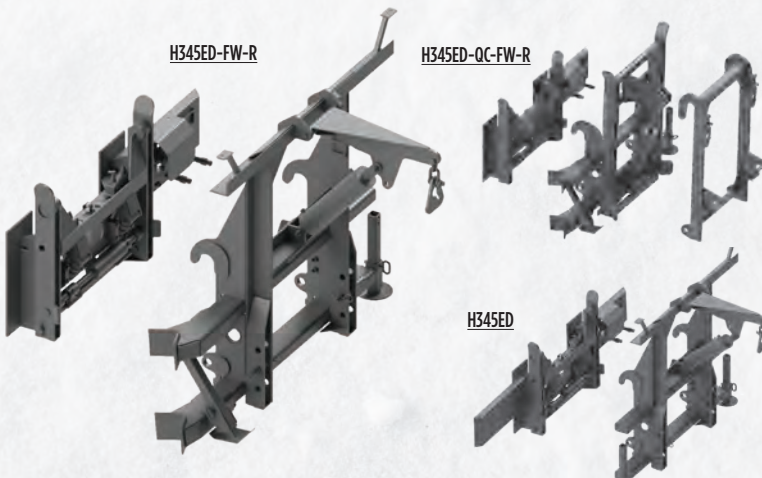


MODEL NUMBER	WEIGHT	CABLE FRONT POST	HYDRAULIC FRONT POST
H345QC - Basic	1,150 lbs	-	-
H345QC-FW-R - Right wing attachment	1,200 lbs	✓	✓
H345QC-FW-FW - Right and left wing attachment	1,200 lbs	✓	✓

H345ED HITCH

DESIGNED FOR ALL CHASSIS

- Easily detachable plow and wing



MODEL NUMBER	WEIGHT	CABLE FRONT POST	HYDRAULIC FRONT POST
H345ED - Basic	1,150 lbs	-	-
H345ED-FW-R - Right wing attachment	1,200 lbs	✓	✓
H345ED-QC-FW-R - Quick detach with right wing attachment	1,625 lbs	✓	✓

H345ONT HITCH

DESIGNED FOR ALL CHASSIS

- Rugged hydraulic hitch with built-in steel bumpers
- Recommended whenever a chassis is to be equipped with a combination front plow and side wing system
- Complete hitch (and wing post if applicable) can be easily tilted forward using two (2) hydraulic cylinders
- Pivot pin with front greasing point to allow for easy maintenance

MODEL NUMBER	WEIGHT
H-345-ONT-FW - With wing attachment	1,150 lbs
H-345-ONT - No wing attachment	1,050 lbs



"H-CUS" HITCH

H-CUS CUSTOM TILT-OVER HITCH

- Several versions of this custom designed hitch are available for installation on specific chassis
- Built-in side plates form an integral part of the hitch - engineered for rapid mount to truck frame
- Low-mount arrangement enables chassis hood to tilt forward at all times

MODEL NUMBER	WEIGHT
TCH345CU-NA-LT-E	685 lbs
HCUSEXT-I-IN2	850 lbs
TCH345CU-NA-LT-F-ST	900 lbs



Available without cheek plates upon request

HITCH OPTIONS



TENCOLOC HITCH SIDE



QUICK TACH HITCH SIDE



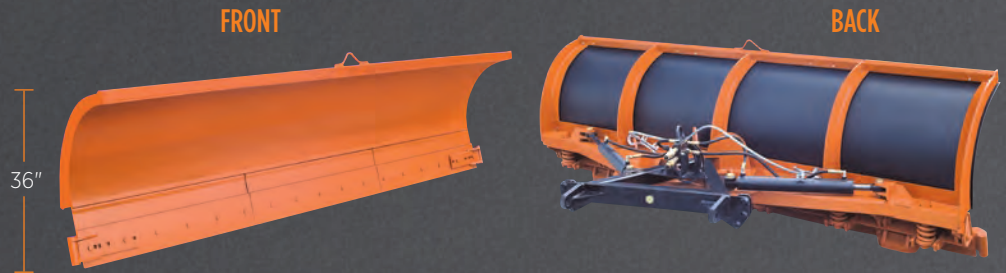
HYDRAULIC TILT

Reversible Plows / Urban and Rural

MEDIUM DUTY TRIP EDGE

DESIGNED FOR URBAN ENVIRONMENTS, INCLUDING PARKING LOTS AND ALLEYS, THIS LIGHTWEIGHT PLOW IS OPERATED WITH A LOW GVWR CHASSIS.

- Available in steel or weight-saving Tenelene
- Reversible plow can be rapidly modified to get to 1, 2 or 3 section bottom trip edge as required. Easily adjusted by attaching/detaching 2 bolts
- 2 curb shoes and 2 moldboard shoes are standard



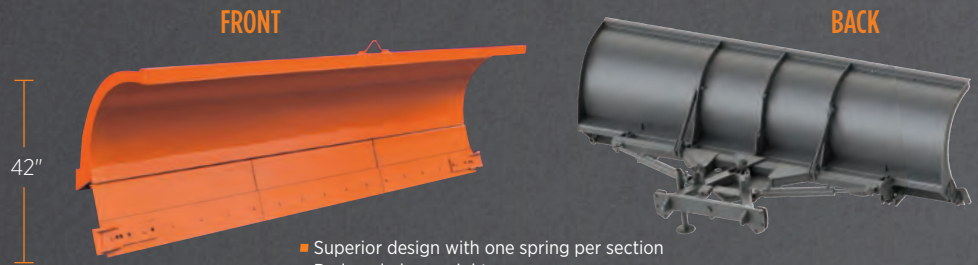
MODEL NUMBER	MOLDBOARD MATERIAL	CLEARING PATH	OVERALL LENGTH	WEIGHT
TCP-9T-36-E1	.300 Tenelene	7' 10"	9'	1,150 lbs
TCP-10S-36-E1	10 ga. steel	8' 8"	10'	1,320 lbs
TCP-10T-36-E1	.300 Tenelene	8' 8"	10'	1,270 lbs
TCP-11S-36-E1	10 ga. steel	9' 6"	11'	1,700 lbs
TCP-11T-36-E1	.300 Tenelene	9' 6"	11'	1,600 lbs

OPTION: Stainless-steel moldboard

HEAVY-DUTY TRIP EDGE

MOLDBOARD CURVATURE DESIGNED TO REDUCE SNOW BLOW-BACK DURING HIGH-SPEED OPERATION.

- Available in steel or weight-saving Tenelene
- Designed for extreme snow removal operations
- Unique bottom section trip edge design permits fast spring tension adjustment and replacement
- Moldboard pitch adjustment



- Superior design with one spring per section
- Reduced plow weight
- Reduced scraper weight
- Minimal maintenance and related costs

MODEL NUMBER	MOLDBOARD MATERIAL	CLEARING PATH	OVERALL LENGTH	WEIGHT
TCP-10-S-42-E4-HA2	10 ga. steel	8' 8"	10'	2,000 lbs
TCP-10-T-42-E4-HA2	.300 Tenelene	8' 8"	10'	1,990 lbs
TCP-11-S-42-E4-HA2	10 ga. steel	9' 6"	11'	2,080 lbs
TCP-11-T-42-E4-HA2	.300 Tenelene	9' 6"	11'	2,065 lbs
TCP-12-S-42-E4-HA2	10 ga. steel	10' 5"	12'	2,150 lbs
TCP-12-T-42-E4-HA2	.300 Tenelene	10' 5"	12'	2,130 lbs
TCP-14-S-42-E4-HA2	10 ga. steel	12' 1"	14'	2,370 lbs
TCP-14-T-42-E4-HA2	.300 Tenelene	12' 1"	14'	2,350 lbs

OPTION: Stainless-steel moldboard

"TWIST AND SHOOT"

COMBINES ALL THE ADVANTAGES OF A ONE-WAY PLOW AND A REVERSIBLE PLOW.

- Weight-saving Tenelene moldboard
- Unique design permits any plowing speed while providing superior snow casting
- Adjustable moldboard shape:
 - One-way profile for right side discharge
 - One-way profile for left side discharge
 - Full moldboard height for right or left side discharge



MODEL NUMBER	MOLDBOARD MATERIAL	CLEARING PATH	OVERALL HEIGHT	NOSE HEIGHT	DISCHARGE HEIGHT	WEIGHT
TCP-11-V-E4-HA2	.300 Tenelene	9' 6"	49 1/4"	34"	48"	2,450 lbs
TCP-12-V-E4-HA2	.300 Tenelene	10' 5"	49 1/4"	35"	49"	2,650 lbs

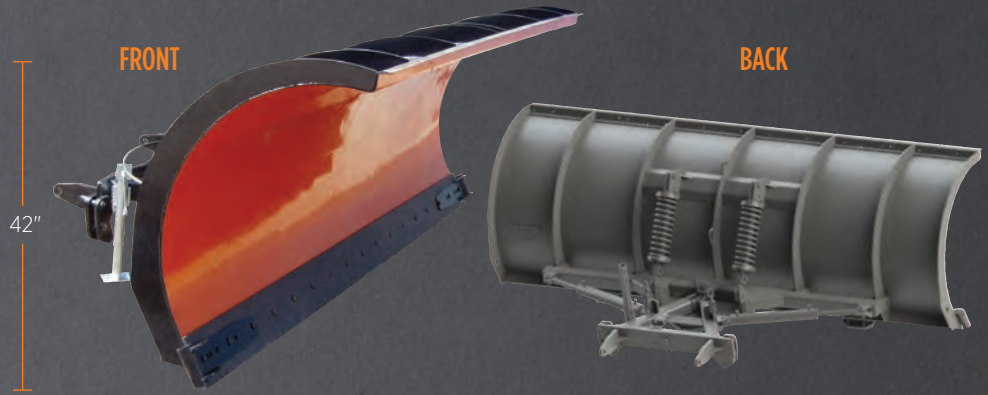
OPTION: Stainless-steel moldboard

Reversible Plows / Highways

REVERSIBLE SNOWPLOW WITH "C-SHAPED" MOLDBOARD

EXCEPTIONAL MOLDBOARD CONTOUR FOR EFFECTIVE SNOW REMOVAL AT ALL PLOWING SPEEDS.

- Unequalled moldboard support structure permits snow clearing operation in the most severe conditions, including high snowfall accumulation on roadways
- A safety trip mechanism tilts the complete moldboard forward using two trip arm assemblies when any obstruction is encountered
- Each trip arm has a heavy-duty compression spring that brings the plow back to its original position after passing a road obstruction



MODEL NUMBER	MOLDBOARD MATERIAL	CLEARING PATH	OVERALL LENGTH	WEIGHT	# OF RIBS
TCP-10-S-42-FKC	10 ga. steel	8' 8"	10'	2,136 lbs	8
TCP-11-S-42-FKC	10 ga. steel	9' 6"	11'	2,209 lbs	8
TCP-12-S-42-FKC	10 ga. steel	10' 5"	12'	2,282 lbs	8
TCP-14-S-42-FKC	10 ga. steel	12' 1"	14'	2,478 lbs	10

OPTION: Stainless-steel moldboard



EXPRESS FREEWAY

IN ADDITION TO ALL THE ADVANTAGES OF A "C-SHAPED" MOLDBOARD, THIS SNOWPLOW OFFERS SUPERIOR SNOW CASTING.

MODEL NUMBER	MOLDBOARD MATERIAL	CLEARING PATH	OVERALL LENGTH	OVERALL HEIGHT	WEIGHT	# OF RIBS
TCP-11-X-FK-HA2	10 ga. steel	9' 6"	11'	42" center/ 54" ends	2,200 lbs	7
TCP-12-X-FK-HA2	10 ga. steel	10' 5"	12'	42" center/ 56" ends	2,280 lbs	7
TCP-14-X-FK-HA2	10 ga. steel	12' 1"	14'	42" center/ 60" ends	2,420 lbs	7

OPTION: Stainless-steel moldboard

Rear Scrapers

IDEAL FOR DE-ICING GRAVEL ROADS.

- Hydraulic lifting and angled positioning to facilitate clearance
- 8' 4" clearing width
- Ultra heavy-duty construction
- Push frame consisting of two (2) 3 1/2" x 3 1/2" x 3/8" tubular levers, a 4" x 6" x 5/8" angle section and multiple strategically placed ribs
- Two (2) 4" x 12" x 11/2" hydraulic cylinders
- One (1) protection valve in the return line
- One (1) accumulator (nitrogen) for cushioning



One-way Plows

THE SAFE HIGH-PERFORMANCE CHOICE

Designed for high-speed snow clearing, Tenco's one-way snowplow casts snow further and more precisely than our competitors plows. Furthermore, thanks to its special curvature, it prevents snow from being suspended in the air, where it can obstruct the operator's field of vision. The result is increased safety and superior operational efficiency.



FEATURES

(Standard on all One-way Plows)

- Roll formed moldboard for better snow dispersal
- Enhanced curvature along upper section to minimize snow blow-back
- Rubber deflector
- Cutting edge supported by sturdy backer angle
- Adjustable moldboard pitch
- Drive frame designed to withstand the rigors of severe snow removal conditions
- Safety caps on compression springs – full moldboard trip models only
- Height-adjustable push frame shoes

FRONT VIEW



STEEL



TENELENE

BACK VIEW



TENELENE

SIDE VIEW



TENELENE

NEW MODEL NUMBER	MOLDBOARD MATERIAL	CLEARING PATH	INTAKE HEIGHT	DISCHARGE HEIGHT	WEIGHT
ONE-WAY FULL MOLDBOARD TRIP PLOW					
TCO-10T-47-SR-ST	.300 Tenelene	9' 2"	26"	47"	980 lbs
TCO-11S-55-SR-ST	10 ga. steel	9' 3"	30"	55"	2,400 lbs
TCO-11S-63-SR-ST	3/16" steel	9' 3"	30"	55"	2,400 lbs
TCO-11T-55-SR-ST	.300 Tenelene	9' 3"	30"	55"	2,400 lbs
TCO-11S-63-SR-ST	10 ga. steel	9' 3"	34"	63"	2,450 lbs
TCO-11T-63-SR-ST	.300 Tenelene	9' 3"	34"	63"	2,450 lbs
TCO-11S-66-SR-ST	10 ga. steel	9' 3"	38"	66"	2,650 lbs
TCO-11T-66-SR-ST	.300 Tenelene	9' 3"	38"	66"	2,640 lbs
TCO-12S-63-SR-ST	10 ga. steel	10' 3"	32"	63"	2,580 lbs
TCO-12T-63-SR-ST	.300 Tenelene	10' 3"	32"	63"	2,550 lbs
TCO-12S-68-SR-ST	10 ga. steel	10' 3"	36"	68"	2,720 lbs

ONE WAY BOTTOM TRIP EDGE PLOW

TCO-11S-57-E2R-HA2	10 ga. steel	9' 3"	33"	57"	2,500 lbs
---------------------------	--------------	-------	-----	-----	-----------

ADVANTAGES OF OPTIONAL TENELENE MOLDBOARD

- Non-corrosive material and a slick surface to prevent snow from adhering to the plow
- A steel structure supports the Tenelene moldboard and ensures that the snowplow has the ruggedness you need

OPTIONS

- Carbide cutting edge
- Screw adjustable drive frame shoes
- Tencoloc swivel bar
- Quick tach swivel bar
- Stainless-steel moldboard available on certain models

Side Wing Systems

INCREASE TOTAL CLEARING WIDTH

A side wing is an easy addition to any chassis already equipped with a standard dump body, conventional spreader or combination dump body / spreader.

- Clear snow from large or small areas using an extendable push arm
- Get superior control and greater precision when raising or lowering the wing thanks to TENCO's dual lifting system design
- Equipped with a floating adaptor, the wing follows the contour of the road surface during clearing operations
- The rugged backer angle made of 4" x 6", x 5/8" thick steel, makes the wing ideal for use in the most severe snow removal conditions
- Side wing moldboards are supported by 3/8" thick full height steel ribs
- Lead section of wing moldboard includes a 1" thick steel plate for attachment to front post hinge

WING TRAVEL POSITIONER: A Virtually Indispensable Option

- A wing travel positioner increases the driver's field of vision by tucking under the passenger window when not in use, and reduces the risk of accident



Wing moldboards are available in steel or corrosion-resistant Tenelene material.

MODEL NUMBER	MATERIAL	CUTTING EDGE LENGTH	OVERALL LENGTH	NOSE HEIGHT	DISCHARGE HEIGHT	WEIGHT
TCW-9T-30-N-R*	.300 Tenelene	9'	10'	24"	30 1/2"	375 lbs
TCW-11T-30-N-R	.300 Tenelene	11'	12'	24"	30"	460 lbs
TCW-9S-37-N-R	10 ga. steel	9'	10'	32"	37"	780 lbs
TCW-9T-37-N-R	.300 Tenelene	9'	10'	32"	37"	790 lbs
TCW-10H-38-N-R	0.188" steel	10'	11'	32"	38 1/2"	910 lbs
TCW-10T-38-N-R	.300 Tenelene	10'	11'	32"	38 1/2"	920 lbs
TCW-11H-39-N-R	0.188" steel	11'	12'	32"	39 1/2"	990 lbs
TCW-11T-39-N-R	.300 Tenelene	11'	12'	32"	39 1/2"	950 lbs
TCW-12H-40-N-R	0.188" steel	12'	13'	32"	40 1/2"	1,040 lbs
TCW-12T-40-N-R	.300 Tenelene	12'	13'	32"	40 1/2"	1,050 lbs
TCW-14H-42-N-R	0.188" steel	14'	14' 10"	32"	42 1/2"	1,167 lbs

* Model TCW-9T-30-N-R Tenelene wing moldboard for low pro-style chassis can only be used in combination with H20 front post and FAF3LP rear post assembly

OPTION: Stainless-steel moldboard available on certain models

OPEN UP A WORLD OF POSSIBILITIES

FRONT-MOUNT SIDE WING SYSTEM



- 3-point mount system: two push arms and one cylinder
- The lift system relies on the front post cylinder and the rear cylinder of the push arms

MID-MOUNT SIDE WING SYSTEM



- 2-point mount system: one push arm and one cylinder
- The lift system relies on the stationary post and the rear cylinder of the push arm

REAR-MOUNT SIDE WING SYSTEM



- The rear-mount side wing is an excellent add-on to an underbody scraper that acts like a scraper extension
- 3-point mount system: two push arms and one cylinder
- The lift system relies on the stationary post and the rear cylinder of the push arms

Slide-in Spreaders, V-Box

CONVERT YOUR STANDARD DUMP BODY INTO A SPREADER

Ideal for snow removal contractors and some municipalities, these super heavy-duty **spreaders** slide easily into and out of an **existing dump body** to help you get the most out of your equipment.

Easy to install when the seasons change

1. **Slide it in**
2. **Secure it**
3. **Connect it**
4. **Fill it up**



Make your spreader last 3X longer by opting for 201 or 304 stainless-steel construction.



MODEL NUMBER	WATER LEVEL CAPACITY	HOPPER LENGTH	HOPPER WIDTH	SIDES HEIGHT	OVERALL HEIGHT	OVERALL LENGTH	OVERALL WIDTH	APPROX. WEIGHT*
TCD-10-54-AS	5.9 cu yds	10'	7'	54"	5' 2"	13' 2"	7'	2,675 lbs
TCD-11-54-AS	6.5 cu yds	11'	7'	54"	5' 2"	14' 2"	7'	2,845 lbs
TCD-10-63-AS	7.8 cu yds	10'	7'	63"	5' 11"	13' 2"	7'	2,775 lbs
TCD-11-63-AS	8.6 cu yds	11'	7'	63"	5' 11"	14' 2"	7'	2,945 lbs
TCD-12-63-AS	9.5 cu yds	12'	7'	63"	5' 11"	15' 2"	7'	3,145 lbs
TCD-13-63-AS	10.3 cu yds	13'	7'	63"	5' 11"	16' 2"	7'	3,315 lbs
TCD-14-63-AS	11.1 cu yds	14'	7'	63"	5' 11"	17' 2"	7'	3,550 lbs
TCD-15-63-AS	11.9 cu yds	15'	7'	63"	5' 11"	18' 2"	7'	3,685 lbs

*With chute

FEATURES

- 10 gauge steel hopper sides, tailgate and front panel
- 3/16" thick steel conveyor section and floor
- Fully welded steel construction
- Optional top screens
- D667X self-cleaning pintle chain
- Optional 304 & 201 stainless-steel construction throughout
- Available cross conveyor, except on model TCD-2-AS

Chassis Mount Spreaders

SPREADERS THAT GO THE DISTANCE

XE Frame Mount Spreader

Designed for durability and high performance.

- Spreader attached to chassis with Aeon rubber springs to reduce shock and vibration
- Inside and outside walls without reinforcement bars are more corrosion-resistant
- Significant weight savings as compared to competitive versions of 12 cu yd spreaders
- Choose from a multitude of configurations – rear discharge, front discharge or front left and/or right side discharge using a cross conveyor
- Smooth inside walls allow for better material flow
- 24" wide main conveyor D88K chain rated @ 49,000 lbs
- 7.7 cu in main conveyor hydraulic motor
- Lowest center of gravity in the spreader industry



BASIC OPTIONS (XE AND XD)

- Various types of ladders, grab handles, lighting systems (including MTQ/QMT version)
- Automated spreader controllers
- Pre-wet system including two (2) 300-litre (80 US gallon) liquid tanks

XD Chassis Mount Spreader

With rear tailgate and front lift hoist for dumping capabilities.

THE ONLY INTERCHANGEABLE MODEL ON THE MARKET

Quick cycle time to remove dump body from chassis and replace **with this roll-off spreader.**



- The spreader is equipped with a tailgate that allows for dumping of remaining load after completion of spreading operations
- Uses the existing truck's telescopic hoist to lift the spreader
- Fully welded steel construction
- Spreader also available in 304 stainless steel

MODEL NUMBER	WATER LEVEL CAPACITY	HOPPER LENGTH	HOPPER WIDTH	SIDES HEIGHT	OVERALL LENGTH*	OVERALL HEIGHT	OVERALL WIDTH WITH LADDER	APPROX. WEIGHT*	CAPACITY
TCD-10-56-XE	5.6 cu yds	10'	92"	56"	10'	77"	102"	3,695 lbs	6.8 cu yds
TCD-10-56-XD	6.1 cu yds	10'	92"	56"	10'	77"	102"	4,215 lbs	6.8 cu yds
TCD-12-56-XE	7.0 cu yds	12'	92"	56"	12'	77"	102"	4,335 lbs	8.4 cu yds
TCD-12-56-XD	7.4 cu yds	12'	92"	56"	12'	77"	102"	4,815 lbs	8.4 cu yds
TCD-14-63-XE	10.6 cu yds	14'	92"	63"	14'	79"	102"	4,830 lbs	12.3 cu yds
TCD-14-63-XD	11.1 cu yds	14'	92"	63"	14'	79"	102"	5,400 lbs	12.3 cu yds
TCD-16-63-XE	12.3 cu yds	16'	92"	63"	16'	79"	102"	5,265 lbs	14.2 cu yds
TCD-16-63-XD	12.8 cu yds	16'	92"	63"	16'	79"	102"	5,800 lbs	14.2 cu yds

*Height of spreaders includes screens | Weight of slide-in spreaders includes chute and V-box

Combination Body (U-COMBO)

VERSATILE, RELIABLE, AND MULTITASKING

Tenco's U-COMBO body combines all the features of a dump body and a spreader in one. Available in a wide range of models, the U-COMBO allows you to spread abrasive from both sides of the truck, as well as from the rear. With this type of body, switching from dump to spread mode is as easy as child's play.

- Unique **U-shaped dump body** structure ensures consistent, uninterrupted material flow to main conveyor
- The ability to spread material on both sides (front right or front left)
- The ability to spread material from the rear or the front by means of the control system within the truck cab
- The ability to carry a minimum of 757 litres (200 gallons) of liquid for the pre-treatment of roads

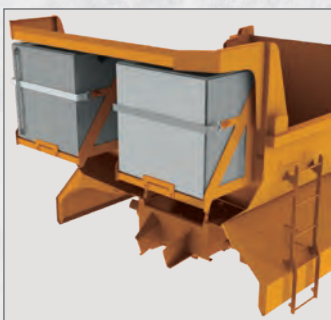
Available in standard mild steel and in 44 high-strength steel



AVAILABLE IN A MULTITUDE OF CONFIGURATIONS



Optional pre-wet liquid tanks* integrated into the dump body



Optional pre-wet liquid tanks* installed below cabshield



Main conveyor driven by a planetary gear, a 10 cu in motor, and a 2" drive shaft



Efficient spreading system

*Tanks are constructed from long-lasting polyethylene material

MODEL NUMBER	HOPPER LENGTH	OVERALL LENGTH	INSIDE WIDTH	SIDE HEIGHT	TAILGATE HEIGHT	WATER LEVEL CAPACITY	MAXIMUM CAPACITY	WEIGHT
TCM-10-T	10'	10' 6"	91 5/8"	46"	52"	7.7 cu yds	11 cu yds	4,460 lbs
TCM-11-T	11'	11' 6"	91 5/8"	46"	52"	8.5 cu yds	12.3 cu yds	4,797 lbs
TCM-14-T	14'	14' 6"	91 5/8"	46"	52"	11.1 cu yds	16.2 cu yds	5,315 lbs
TCM-15-T	15'	15' 6"	91 5/8"	46"	52"	12 cu yds	17.5 cu yds	5,885 lbs
TCM-16-T	16'	16' 6"	91 5/8"	46"	52"	12.8 cu yds	18.8 cu yds	6,450 lbs
TCM-20-T	20'	20' 6"	91 5/8"	46"	52"	16.9 cu yds	23 cu yds	8,900 lbs
TCM-21-T	21'	21' 6"	91 5/8"	46"	52"	17.7 cu yds	24 cu yds	On demand

12M Dump Body / Spreaders

OFTEN IMITATED, BUT NEVER EQUALLED

Designed to be corrosion-resistant, the 12M dump body and spreader combination is the most solid and durable in the industry. Its unrestricted rectangular shape allows for maximum load carrying capacity, whether it is being used as a dump body or a spreader.

- An exposed tilting side wall, unique to the 12M dump body and spreader combination, facilitates cleaning, thus preventing the accumulation of abrasives between the walls and providing better corrosion resistance
- Full width tailgate enables 12M body to undertake all dump body functions
- The floor of the 12M dump body and spreader is robust and equipped with two cylinders, ensuring that the side-to-side tilting of the floor is safe and provides even lifting, with no chance of collapse
- **Many critical components are made of Brinell 450 steel, ensuring the highest durability**
 - Side and front panels manufactured from Brinell 450 steel
 - Six (6) panel tailgate includes 3/16" thick Brinell 450 steel
 - Floor and conveyor cover is constructed from 3/16" thick Brinell 450 steel
- Floor rotates on 1 3/4" induction-hardened chrome steel hinge shaft for superior strength
- Hinged conveyor cover remains with body at all times
- Long members of 10" I-Beam @ 25.4 lb/ft. STANDARDS
- Bolt-on floor with 3 greasing points on single axle, 4 greasing points on tandem axle

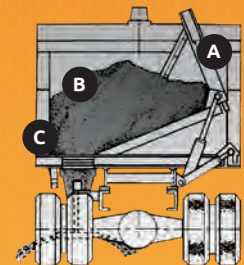
OPTIONS

- Electronic spreader control
- Coal chute door (1, 2 or 3 as needed)
- Rear tailgate lateral opening (barn door)
- Bolt-on apron
- Sides, front panel and tailgate constructed from 304 stainless steel
- Hinged, fold-up type ladder
- Pre-wetting system with 160-gallon tank installed under cabshield
- Summer chute
- Special paint
- Hydraulically actuated discharge chute
- Screens
- Lights in rear corner posts
- Additional greasing points on floor hinge (3 or 4)



MAXIMUM USE OF DUMP BODY CAPACITY

- A** Load is substantially diminished before activation of side tilt mechanism is required
- B** Full capacity of body is used
- C** Rapidly convert from dump to spread mode by adjusting hinged conveyor cover



MODEL NUMBER	INSIDE LENGTH	INSIDE WIDTH	SIDE HEIGHT	TAILGATE HEIGHT	WATER LEVEL CAPACITY	APPROX. WEIGHT
TCB-10-T-CL-C-LF	10'	88"	27"	39"	6.11 cu yds	4,860 lbs
TCB-11-T-CL-C-LF	11'	88"	27"	39"	6.72 cu yds	5,360 lbs
TCB-13-T-CH-C-LF	13'	88"	39"	52"	11.47 cu yds	6,300 lbs
TCB-14-T-CH-C-LF	14'	88"	39"	52"	12.35 cu yds	6,670 lbs
TCB-15-T-CH-C-LF	15'	88"	39"	52"	13.24 cu yds	6,850 lbs
TCB-20-T-CH-C-LF	20'	88"	39"	52"	16.44 cu yds	9,300 lbs



OPTION:
304 stainless-steel
construction

Underbody Scrapers

CLEAN AND LEVEL

900 SERIES UNDERBODY SCRAPER



Hydraulically operated reversible scraper

Every component of the 900 Series scraper has been meticulously designed to withstand the most severe road maintenance tasks encountered year round.

- 1' thick one-piece unnotched rotating plate
- Lift cylinder / trip spring canisters are retained by 8 1/4" x 8 1/4" 4-bolt flanges
- Two (2) 4" diameter double acting reverse cylinders are protected by a cross-over relief valve
- Reversing cylinders are attached to the rotating plate with 2" pivot pins
- Safe mechanism



NEW MODEL NUMBER	MOLDBOARD LENGTH	MOLDBOARD THICKNESS	MOLDBOARD HEIGHT	CUTTING WIDTH AT 45°	WEIGHT
<i>TCU-910-T-K-RH</i>	10'	1"	20"	7' 1"	1,950 lbs
<i>TCU-911-T-K-RH</i>	11'	1"	20"	7' 9"	2,050 lbs
<i>TCU-912-T-K-RH</i>	12'	1"	20"	8' 6"	2,150 lbs

TCU-311 SERIES UNDERBODY SCRAPER



Stationary scraper with air springs

For operator safety, a dual air bag system cushions the impact upon encountering road obstructions. Independently controls the pressure of each air bag for maximum efficiency when scraping hard-packed snow and ice – especially on uneven road surfaces.

- 25-degree angle
- 1/4" Brinell 450 blade
- Four (4) reinforcement ribs in 50W steel
- Floating down by chain
- Low maintenance
- Easy installation
- Two (2) triple convoluted air bags with direct push on cutting edge exerting higher pressure



NEW MODEL NUMBER	MOLDBOARD LENGTH	MOLDBOARD THICKNESS	MOLDBOARD HEIGHT	CUTTING WIDTH AT 45°	WEIGHT
<i>TCU-310-T-P-FX</i>	10'	.25" / Brinell 450 steel	15"	108 3/4"	1,180 lbs
<i>TCU-311-T-P-FX</i>	11'	.25" / Brinell 450 steel	15"	119 5/8"	1,150 lbs
<i>TCU-311-OSC-T-P-FX*</i>	11'	.25" / Brinell 450 steel	15"	119 5/8"	1,350 lbs

*The center pivot allows to follow the road contour.

Tenco Husky Equipment Series

A HEAVY-DUTY PARTNER FOR LIGHT TRUCKS

By combining the reliability of our products with weight reduction technology, we have created the perfect equipment to allow light trucks to carry out heavy-duty work.

- Suitable for Class 5 and 6 light-duty trucks (GVW of 19,000 to 33,000 lbs.)
- Side tilt combination dump body / spreader
- One-way snowplows and trip edge reversible snowplows
- "Reverse-a-way" one-way moldboard with reversing drive frame
- Front- or rear-mount side wing systems



HUSKY COMBINATION DUMP BODY / SPREADER

Available in either mild steel or 304 stainless steel. This multipurpose body is able to perform dump body functions year round and transform into a salt/sand spreader within minutes.

MODEL NUMBER	INSIDE WEIGHT	SIDE HEIGHT	TAILGATE HEIGHT	WATER LEVEL CAPACITY	APPROX. WEIGHT
TCB-8-P-DF-S-LF	8'	18"	24"	3.26 cu yds	3,150 lbs
TCB-9-L-DF-S-LF	9'	18"	24"	3.67 cu yds	3,275 lbs
TCB-10-L-DG-S-LF	10'	18"	24"	4.07 cu yds	3,400 lbs

SNOWPLOWS



Trip edge reversible snowplow

Model TCP-10-T-36-E1

- 9' and 10' wide Tenelene versions
- 10' wide steel version
- 36" high moldboard

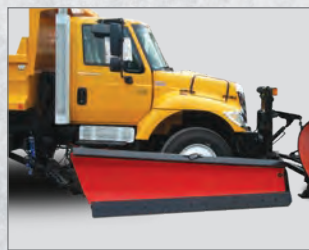


Full trip one-way snowplow

Model TCO-10T-47-SR

- 9' 2" clearing path
- Lightweight Tenelene moldboard
- 26" intake

SIDE WING SYSTEMS



Front-mount

- Increases clearing path of low GVW snow-fighting vehicle
- Lightweight design includes Tenelene side wing moldboard
- Full hydraulic front and rear post



Rear-mount

Anti-icing Liquid Sprayers

CONVERT YOUR DUMP BODY INTO A TANKER TRUCK

Available in a variety of sizes and capacities to adapt to your existing dump truck fleet, slip-on tanks are ideal for applying **anti-icing liquid** and **for dust control**.

- Suitable for U-shaped or rectangular dump bodies
- UV-resistant polyethylene tank
- Frame made of high-resistance steel tubes (better than C-profile beams)
- Automatic loading system positioned under the frame
- Attaches to the existing interlock system of the dump body rear panel
- Safety chains or hooks for chains
- Stainless-steel spray bars
- Adjustable spray bar height
- Adjustable telescopic support legs
- Folding leg movements controlled by springs and shock absorbers
- Stainless-steel pump and valve cover
- Centrifugal pump with hydraulic drive provides a flow of up to 795 l/min (210 gpm)
- Electric ball check valves
- Durable epoxy finishes with two (2) components

An array of options is available to adapt the system to your needs



WATERING HAS NEVER BEEN SAFER OR EASIER THAN THIS

Thanks to its extendable arm and directional nozzle that can bypass obstacles, the PCL-500 offers a clean, safe, and efficient way to hose down sidewalks and water flowers in hanging baskets on lamp posts.

Benefit from Tenco's expertise as North America's only manufacturer of watering arms.

THE PCL-500 WATERING ARM
is an exclusive Tenco patent product

PCL-500 TENCO WATERING ARMS

- Add a reliable piece of equipment to your tanker truck
- The PCL-500 arm is the safest and most reliable equipment on the market
- Flexibility allows the arm to move around obstacles such as park benches, garbage cans, etc.
- The powerful PCL-500 is ideal for cleaning streets, thanks to water flow controlled by its directional nozzle
- Can be used for spraying chemicals on trees, flowers, and lawns
- The PCL-500 can also be used to water outdoor skating rinks
- Entirely hydraulic components

In cab controls



Founded in 1976, and now one of North America's most renowned companies, Tenco specializes in the manufacture, distribution and installation of snow removal and anti-icing equipment.

TENCO offers:

- a complete range of snow removal and anti-icing equipment
- runway sweepers
- reliable, superior-quality equipment
- unparalleled customer service via a network of more than 80 distributors worldwide
- a vast parts inventory
- installation of your snow removal equipment
- upfitting of turnkey truck fleets tailored to your needs

TENCO Inc. also distributes various other products, including:

- self-propelled snowblowers
- dump bodies
- Giletta - Bucher Municipal spreaders

TENCO.CA

**PROFESSIONAL
SERVICE
24/7**

TENCO INC. | ST-VALERIEN DE MILTON, QC

1318 Principale, St-Valerien-de-Milton, Quebec J0H 2B0, Canada
T. 450 549-2411 | **Toll free** 1 800 318-3626 | **F.** 450 549-2410

TENCO INC. Parts Depot | GREATER MONTREAL

2220 Michelin Street, Laval, Quebec H7L 5C3, Canada
T. 514 341-3236 | **Toll free** 1 877 408-3626 | **F.** 514 341-1014

TENCO INC. Parts and Service Centre | GREATER TORONTO AREA

6780 Pacific Circle, Unit 4, Mississauga, Ontario L5T 1N8, Canada
T. 905 795-8868 | **F.** 905 795-8333

TENCO INC. | ALBERTA BRANCH

4398 112th, Avenue SE, Calgary, Alberta T2C 2K2, Canada
T. 403 271-6883 | **F.** 403 271-2385

TENCO INDUSTRIES INC. | LAKEVILLE, NY

5700 S. Lima Rd, Lakeville, New-York 14480, United States
T. 585 346-3040 | **Toll free** 1 800 808-3626 | **F.** 585 346-2982

TENCO INDUSTRIES INC. | BARRE, VT

29 Pitman Road, Suite #2, Barre, Vermont 05641, United States
T. 802 476-3161 | **Toll free** 1 800 451-5014 | **F.** 1 802 476-1003

VISIT TENCO.CA TO FIND A DISTRIBUTOR NEAR YOU.